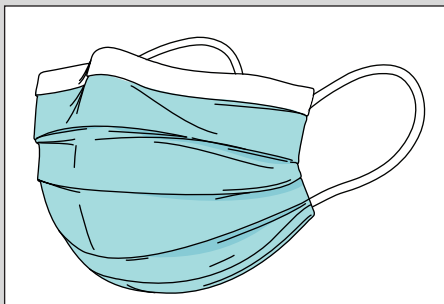


Surgical Type IIR Face Mask 3-PLY



Surgical Type IIR Face Mask
3 Ply (BLUE)

PACKAGING:

15800: 50 Pieces per dispenser, 40 Dispensers per case.

BACTERIAL FILTRATION EFFICIENCY:

98%

MATERIAL LIST

Outer Layer: Polypropylene
Filter Layer: Meltblown
Inner Layer: Non Woven fabric

Head Strap: Elastic
Nose Clip: Integrated Wire

DIMENSION

Width of Mask: 175mm
Depth of Mask: 95mm
Ear Loop: 180mm
Weight per mask: 10g

PRODUCT DETAILS

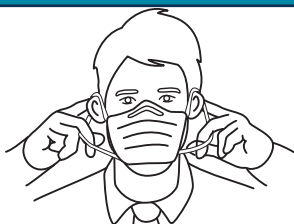
- Ear Loop Fastening
- 3 Ply - Non Woven Polypropylene
- Integral nose wire coated strip for optimum fit
- Secure and comfortable fit around face
- Single Use Only
- R = Splash Resistant
- Latex free elastic
- Surgical Mask

APPLICATION FOR USE

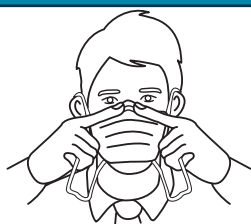
Recommended Applications Include: Healthcare professional, Operation room, Medical setting, Patient contact, Care home staff.

INSTRUCTIONS FOR FITTING

SURGICAL FACE MASK



1. Hold the mask by the ear loops, place a loop around each ear.



2. Ensure the nose wire is moulded around your nose to allow for a close fit.



3. Open mask fully for face coverage.

STORAGE

Store in a cool, dry place with sufficient ventilation. Temperature range of storage conditions: 10°C - to 25°C. Relative humidity of storage conditions must not exceed 50%.
Keep out of direct sunlight