



Sophia Hi-Vis Lightweight Jacket

The Sophia Hi-Vis Lightweight Jacket is perfect for layering up in changeable weather conditions. With EN 343 class 4 water resistance and angled torso retro reflective tape, this jacket keeps you safe and dry. A toggled adjustable hem and side panelling provides a fitted shape for added comfort and style, making this lightweight jacket a wardrobe essential for work.

Features

- EN ISO 20471 Class 3
- RIS-3279-TOM (Orange only)
- EN 343 Class 4:1:X
- 2 band & brace
- Concealed storm flap with two-way zip
- Angled hi-vis bands on the front
- Adjustable velcro cuffs
- 2 concealed zipped front pockets
- Inner chest pocket
- Concealed detachable hood with drawstring
- Toggled adjustable hem
- Flattering fit

Fabric

- Main - 300 Denier Oxford PU fabric
- Lining - Mesh

Applications

Tasks with a hi-vis requirement – traffic, security, event marshalling, driving, construction, roadworks, wet weather tasks.
Rail/underground (Orange version only)

Packaging

1 piece per bag - 10 bags per case



Product Code

| | | |
|--------------|--------|---|
| SHV-L05241-8 | 8 - 22 | NEW! Sophia Lightweight Jacket - Yellow |
| SHV-L05281-8 | 8 - 22 | NEW! Sophia Lightweight Jacket - Orange |

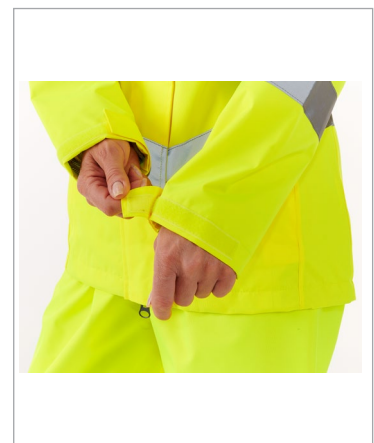
Washcare Symbols



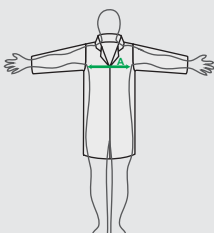
Standards



PPE Regulation (EU) 2016/425 as retained in the UK and amended.
EN ISO 20471:2013+A1:2016- High Visibility Warning Clothing for Professional Use
RIS-3279-TOM - Rail Industry Standard (Orange Garment Only)
EN 343:2019



Size Chart



| Measurements in cm | 8 | 10 | 12 | 14 | 16 | 18 | 20 | 22 |
|--------------------|---------|---------|----------|-----------|-----------|-----------|-----------|-----------|
| To fit (A) | 88 - 92 | 92 - 96 | 96 - 100 | 100 - 104 | 104 - 108 | 108 - 112 | 112 - 116 | 116 - 120 |

Issue No.: 1

Issue Date: 09.02.2023