

Customer Information Sheet

SHOULD THE HIGH VISIBILITY PROPERTIES OF THIS GARMENT BECOME SEVERELY IMPAIRED THE ITEM SHOULD BE CHANGED

PRODUCT INFORMATION

PRODUCT NAME: Hi Vis 2 Tone Executive Vest

PRODUCT CODE: SHV-253491-7 Yellow/Navy SHV-25261 - Red/Grey
 SHV-253891-7 Orange/Navy SHV-25461 - Yellow/Grey
 SHV-25431-7 - Orange/Green SHV-25861 - Orange/Grey
 SHV-25641-7 - Yellow/Black SHV-25811 - Orange/Royal
 SHV-25681-7 - Orange/Black SHV-25411 - Yellow/Royal

PRODUCT DESCRIPTION: Hi Vis Executive Vest with shaped hem. CF Zipper to fasten. Two tone coloured vest with contrast binding.

MATERIAL CONTENT: 100% Polyester

WASH CARE: MAX 25 WASH CYCLES



STANDARDS: Conforms to EN ISO 20471:2013+A1:2016
 EN ISO 13688:2013
 Class 1 for sizes SMALL TO 4XLARGE

Minimum area of fluorescent & reflective material meets class 1 for size Small to 4XLarge.

Class 1: Minimum level of protection
 Class 2: Intermediate level of protection
 Class 3: Highest level of protection



These garments comply with the essential health and safety requirements of PPE Regulation (EU) 2016/425 and Personal Protective Equipment by the PPE Regulation 2016/425 (as retained in UK and amended)

LIMITATIONS OF USE:

The garment should be worn fastened at all times to provide the correct level of protection as stated above. DO NOT modify or alter the garment. This garment must be kept clean to remain effective, replace if permanently stained or faded. This garment is a conspicuity aid. Regular comparison against a new garment is recommended.

AFTERCARE:

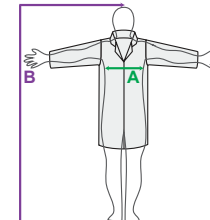
See instructions on garment label. Liability will not be accepted where the care label has been ignored, neglected, defaced or removed. The stated maximum number of cleaning cycles is not the only factor related to the lifetime of the garment. The lifetime will also depend on usage, care, storage etc.

STORAGE AND TRANSPORTATION:

Always store in clean, dry conditions. DO NOT store in places subject to direct, strong sunlight. If the garment becomes wet allow to dry at room temperature before storing. This garment is suitable for transportation as supplied by the manufacturer.

GARMENT DISPOSAL:

This garment is suitable for disposal via landfill or municipal waste incineration in accordance with European standards, provided they have not been contaminated with hazardous substances. For more information contact your local environmental officer.



SIZE	CHEST (A)	HEIGHT (B)
S	92-96	164-172
M	100-104	172-180
L	108-112	180-188
XL	116-122	188-196
2XL	124-132	188-196
3XL	136-144	196-204
4XL	148-152	196-204

To find Declaration of conformity documentation search for your desired product at - www.supertouch.com

EU NB:SATRA Technology Europe Ltd, Bracetwon Business Park, Clonee, Dublin, D15 YN2P, Ireland NB: 2777
 UK AB:SATRA Technology Centre, Wyndham Way, Telford Way, Kettering, Northampton, NN16 8SD, United Kingdom
 AB: 0321